



LMIH

Relays

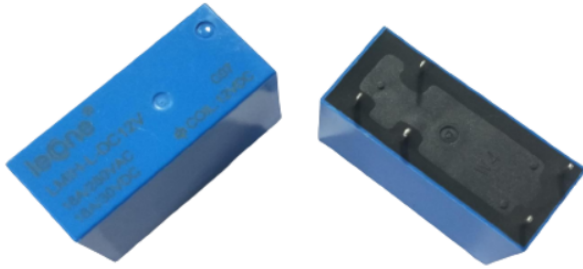
General control
16A PCB Relay

Ver 1.0 (August 2023): Glomore

This document is a property of **Glomore Electro-Tech Solutions LLP**. This is a completely confidential document and cannot be copied, duplicated or re-distributed without permission from the owner. **Glomore Electro-Tech Solutions LLP** holds the right to change the specifications without prior notice. All Rights Reserved.

Prepared By	Approved By	Customer Approval
		Signature with Company Seal

*Kindly return this datasheet to us with your signature and company seal within one month, or we will consider the document to be accepted by you.



LMIH - L - DC12V

Relay Type:-

Coil Type:- L : 0.54W

D : 0.72 W

Coil Voltage:- 5, 12, 24 VDC

Features :

1. Slim type with 16A rated load.
2. 8 mm insulation distance.
3. Dielectric strength 5,000V and surge strength up to 10,000V.
4. High sensitivity DC coil type of low power consumption available.

Model	LMIH	
Features	Dimension L * W * H (mm)	29.1 * 20.6 * 13
	Terminal Type	PCB
	Switching Capability	16A
Contact Data	Contact Form	1C
	Contact Material	Ag Alloy
	Contact Capacity	1A/1C : 16A/250VAC/30VDC
	Contact Resistance	100mΩ Max. (at 1A / 6VDC)
General Data	Dielectric Strength	1000VAC (Between open Contacts)
		5000VAC (Between coil & Contacts)
	Insulation Resistance	100MΩ 500VDC
	Electrical Life	1 x 10 ⁵
	Mechanical Life	1 x 10 ⁷
Operating Temperature	-45 °C to + 85 °C	
Application	Switching Power Supply, Vending Machine, Monitor, UPS, Timer, Card Reader, Frequency Transformer, etc.	

COIL SPECIFICATION (AT 20°C)

Coil Sensitivity	Nominal Voltage (VDC)	Nominal Current (mA)	Coil Resistance ($\Omega \pm 10\%$)	Power Consumption (W)	Pull-In Voltage (VDC)	Drop-Out Voltage (VDC)	Maximum Allowable Voltage (VDC)
LMIH D Coil type	5	138.9	36	Abt. 0.72	80% Maximum	5% Minimum	130%
	12	60	200				
	24	29.3	820				
LMIH L Coil type	5	106.4	47	Abt. 0.54	80% Maximum	5% Minimum	130%
	12	44.4	270				
	24	21.8	1,100				

Dimensions :

